

DOORS OPEN PENINSULA 2023

Celebrating 100 Years of History on the Palos Verdes Peninsula



COMMEMORATIVE BOOKLET

JUNE 17, 2023

PVLD.ORG/DOP



DOP 2023 COMMITTEE

Karina Bañales
Colleen Cotter
Michele Fricke
Greg Grammer
Richard Ishibashi
Sarah Lann
Leticia Polizzi
Ryan Roy
Anastasia Seims
Suzanne Seymour
Monique Sugimoto
Gabrielle Swain

PALOS VERDES LIBRARY DISTRICT BOARD OF TRUSTEES

Rosa Kwon Easton, *President*
Bob Parke, *Vice President*
Zoe Unno, *Secretary*
Jonathan Beutler
Kingston Wong

PENINSULA FRIENDS OF THE LIBRARY BOARD

Ray Randall, *President*
Sharron Parke, *Vice President*
George Legg, *Treasurer*
Nancy Mahr, *Secretary*
Ron DeFrees
Merlin David
Jennifer King
Sabina Merchant
Lloyd Miste
Susan Paul
Darlene Skorka
Helen Stoddart

PENINSULA FRIENDS OF THE LIBRARY STAFF

Gillian Gordon,
Interim Administrative Director
Diana Morgan,
Friends Administrator

Photos courtesy of the
Palos Verdes Library District
Local History Collection.

© Palos Verdes Library District 2023

THANK YOU TO OUR SPONSORS



PENINSULA
Friends
OF THE LIBRARY

PRESENTING SPONSOR

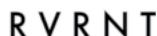


MALAGA
BANK

MAJOR SPONSOR



CITY PARTNERS



Palos Verdes College, 1947.

RECOGNITION

This program is made possible by the generous support of the Peninsula Friends of the Library.

Palos Verdes Symphonic Band brought to you by Palos Verdes Peninsula Association of REALTORS®.

Thanks to Dana Graham — Palos Verdes resident since 1947 — and Dana Graham Real Estate for support of the Mini-Therapy Ponies.

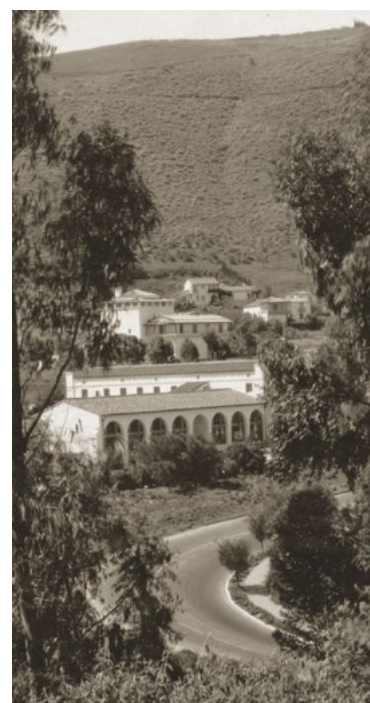
Thank you to the Long Beach Model-T Club.

Thanks to the Palos Verdes Peninsula Unified School District.



“A youngster that reads a lot never has to wonder what he is going to do with his time.”

— ROMAYNE MARTIN,
Founder of PV School
and Library Districts



[TOP TO BOTTOM]

Official checkers at entrance of real estate rally counting visitors, 1923.

Romayne C. Martin, one of the earliest and most influential woman during the early years, 1926.

Malaga Cove Plaza with Syndicate Building in the foreground and Library in the background, 1930.

WELCOME

PALOS VERDES LIBRARY DISTRICT DIRECTOR, JENNIFER ADDINGTON

Dear Peninsula Community,



On behalf of the Palos Verdes Library District (PVLD), Peninsula Friends of the Library (PFL), and Peninsula cities and organizations, I'd like to welcome you to **Doors Open Peninsula 2023: Celebrating 100 Years of History on the Palos Verdes Peninsula.**

DOP (pronounced 'dope' without the e) commemorates a 1923 real estate rally that essentially launched the modern Palos Verdes Peninsula development and led to the community we are today. What could be more fitting than to celebrate this milestone than with a Peninsula-wide open house! This is your chance to view architectural sites, museums, and cultural institutions throughout the Peninsula and learn more about the area's unique history and culture.

PVLD has proudly served the Peninsula for over 93 years, and we are thrilled to bring you this program with our partner cities and organizations. We hope you will experience this community-wide, multigenerational event as a chance to connect, be inspired, and continue building our wonderful community for future generations.

We look forward to seeing you there.

JENNIFER ADDINGTON, Director, Palos Verdes Library District



PENINSULA FRIENDS OF THE LIBRARY PRESIDENT, RAY RANDALL

Dear Palos Verdes Friends,



Happy Birthday to Palos Verdes! The Peninsula Friends of the Library is very pleased to assist in the "Doors Open Peninsula 2023" celebration event for our wonderful community.

We encourage you to participate in the many activities planned and learn about what makes our community so special. From the Peninsula-wide open house to art exhibits and more, we hope you'll find these activities fun for you, your family, and friends.

Congratulations Palos Verdes. Cheers to the next 100!

RAY RANDALL, President, Peninsula Friends of the Library



WHAT YOU NEED TO KNOW

DOORS OPEN PENINSULA DETAILS



The DOP 2023 Organizing Committee welcomes you to DOP 2023, a program that brings together the Peninsula cities in celebration of this milestone event. Thanks to our participating organizations and Peninsula cities, there are over 50 DOP sites across the Peninsula to visit and learn more about. The sites include historical plaques designated by the Palos Verdes Historical Society over the years. While some of these places may be places you pass by every day, and are always open, some of these places will be available for the first time.

To help you plan your day, the DOP sites are organized into five themed categories: architecture, business districts (built and unbuilt), civic, cultural history, and environment and urban planning. The idea is that starting from those categories you can then mix and match to craft your own tailor-made adventure. The sites are listed alphabetically with their numbers so you can find them on the map.

Use this brochure as your “passport” and grab a stamp from each site you visit. For sites that are just plaques or unstaffed, we’ve pre-filled the blue stamp area for you so all you have to do is stop by! And if you don’t get to all the sites this time, you can keep some items on your bucket list of things to do and check back with the site later on.

And what’s an anniversary without cake and fun activities? Make sure to visit the DOP Hub site on the **original** rally site, Malaga Cove School, between 9:00 and 4:00. Visit our website pvld.org/DOP to learn more about each site and other DOP activities.

We look forward to seeing you there.

Monique Sugimoto

MONIQUE SUGIMOTO, Chair of the DOP 2023 Organizing Committee
Archivist and Local History Librarian, Palos Verdes Library District



TOUR TYPES

- ARCHITECTURE
- BUSINESS DISTRICT
- CIVIC
- CULTURE & HISTORY
- ENVIRONMENT & URBAN PLANNING



PARKING & SHUTTLES

Street parking is mostly available at each site. Check each site for parking availability and restrictions.

Additional parking is available in Palos Verdes Estates at St. Francis Episcopal Church lower parking lot.

A FREE shuttle will be available from Valmonte School to Mirlo Gate Lodge. Service available from 9:00-4:30. Round trip is 25 minutes.

DOORS OPEN PENINSULA (DOP) HUB

375 VIA ALMAR, PVE, 90274



Malaga Cove School (PVPUSD District Offices) is the DOP Hub. Pick up your DOP commemorative brochure at the Hub or any one of the Library’s three locations. Participating DOP sites will also have a limited number of brochures available.

The Hub hours are 9:00 - 4:00. The Hub will have a fleet of Model-Ts, tables for community organizations, the PV Symphonic Band (12:15 - 2:00), Mini Therapy Ponies (9:00 - 12:30), celebration cake (12:30) and more!

At the Hub, pick up a free autographed copy (while supplies last) of *P is for Palos Verdes* by local author Mary Jo Hazard.

This book of rhyming text and beautiful photos has its own checklist to encourage kids of all ages to track their discoveries on the Peninsula. (Additional copies available for purchase at the Peninsula Center Library Gift Shop.)

For all jigsaw puzzle fans, visit the Peninsula Friends of the Library table at the Hub to see a puzzle created by Good World Puzzles and artist Jake Tedesco that captures the Peninsula of today and yesterday. (Puzzles available for purchase.)

Each DOP site is participating with its own hours. Please be mindful of neighbors and parking restrictions for those sites located in residential areas.

ADDITIONAL PROGRAM

“Palos Verdes Peninsula: Its Founding, Its Culture, Its Beauty,” an exhibit by artist Rick Humphrey can be seen at Malaga Cove Library Gallery from June 22 to July 08. The opening reception will be held on June 24th from 2:00 - 4:00 pm in the Gallery.

#DoorsOpenPeninsula

DISCLAIMER

Information in this brochure is subject to change. For the latest information on DOP site availability and participation, please contact the DOP site directly.



HISTORY

We take this 100-year milestone as an opportunity to celebrate the Peninsula, but its history dates much further back. For centuries the Tongva-Gabrielino have called this area home. In the mid-nineteenth century, the Peninsula was incorporated into the Mexican land grant known as Rancho de los Palos Verdes and served as a working ranch where, for decades, cattle grazed the hills. Later, in the early twentieth century, a large population of Japanese farmers settled on the Peninsula and farmed the area until forcibly moved to internment camps during World War II.

In 1913, Frank Vanderlip, Sr., former president of the National City Bank of New York (now Citibank), and a group of investors purchased the area to develop it into a residential colony. World War I slowed the grand plans for the residential colony. Within a few years after the war ended, however, the “Palos Verdes Project”, with experts in planning Frederick Law Olmsted, Jr. and Charles

Cheney, was up and running. The 1923 rally launched the sale of lots in the first planned subdivision, which became the City of Palos Verdes Estates in 1939.

Just after World War II, the residential population skyrocketed, eventually leading to the formation of the next three cities: Rolling Hills and Rolling Hills Estates, both founded in 1957, and Rancho Palos Verdes, founded in 1973.

A unique aspect of the Peninsula’s history is its military connection. Starting in 1914 with the creation of Fort MacArthur, the Peninsula played a part in U.S. military defense until at least 1974. Nowhere is this more evident than at the Rancho Palos Verdes City Hall site.

The Peninsula has been known for its views and open space, and to many it is the hidden gem of Los Angeles County.

Panoramic view of agricultural fields in Portuguese Bend, 1920.



37. 4TH CITY FOUNDERS PLAQUE AT ROBERT E. RYAN PARK

● CULTURE & HISTORY

This tree grove honors Gordon Curtis, Dorothy Le Conte and Fred Hesse Jr. for their efforts in RPV incorporation. The park is RPV’s first park and was transferred from LA County in 1973. “Rancho Palos Verdes Park” was renamed in 1995 to honor Robert E. Ryan, a 20-year council member and instrumental in RPV’s incorporation.

30359 Hawthorne Boulevard, RPV, 90275
Dawn to dusk



41. BATTERY BARNES (Exterior only)

● CIVIC

Battery Barnes (aka Battery 240) is a fixed artillery site located just west of the Rancho Palos Verdes City Hall buildings. Formerly part of the Point Vicente Military Reservation, it is now owned by the U.S. Coast Guard. The Battery once housed 6” guns that had a range of 15 miles. These weapons

were phased out for anti-aircraft weapons. Site included in Alta Vicente Reserve hike conducted by Los Serenos docents starting at 9:00 am. See losserenos.org/pdfs/CurrentHikeFlyer.pdf

Rancho Palos Verdes City Hall,
30940 Hawthorne Boulevard, RPV, 90275
Docent available 9:00 - Noon. Site is a short walk on an unpaved trail located past City Hall buildings.



20. BEAUTIFY LUNADA BAY

● ENVIRONMENT & URBAN PLANNING

Directly across from Lunada Bay Elementary

School, visitors will have breathtaking views, and observe birds and butterflies on this two acres of newly vegetated oceanfront native habitat. A community-driven project of the Lunada Bay Homeowners Association (LBHOA) in partnership with the City of PVE and the Palos Verdes Peninsula Land Conservancy (PVPLC), The Beautify Lunada Bay Pilot restores neglected parkland with attractive, locally native, drought-tolerant plantings. Information and hand-outs on native plants, PVPLC, the California Native Plant Society and the LBHOA will be available.

520 Paseo Lunado, PVE, 90274
lbhoa.org/BeautifyLunadaBay
10:00 am - 3:00 pm



54. CABRILLO MARINE AQUARIUM

● CULTURE & HISTORY

The Aquarium was founded in 1935. From

modest beginnings as a collection of shells to today’s Frank Gehry-designed center for teaching and research, the Aquarium is an essential resource for conservation, environmental and marine science education. Located closest to one of the largest ports in the world, the Aquarium and surrounding beaches provide a unique opportunity to experience the urban and ocean relationship. Visit the Exploration Center and Aquatic Nursery and view a short film. Sensory inclusive. Call site for touch tank, grunion hatching and feeding presentation schedule.

3720 Stephen M White Dr., San Pedro, 90731
cabrillomarineaquarium.org • 310.548.7562
Noon - 5:00 pm
Parking is \$1 an hour (Debit or credit card payment only.)



Public Restrooms



Partially Handicapped-accessible



Fully Handicapped-accessible



Family Friendly



Food On Site



Palos Verdes Historical Society



California Register Historical Resources



National Register of Historic Places



30. CHADWICK SCHOOL PLAQUE

● CULTURE & HISTORY

Founded in 1935 by Margaret Chadwick and Commander

Joseph Chadwick in San Pedro, the school moved to Palos Verdes in 1938 for pre-primary to senior high school. The school welcomed local students and for those boarding. Frank Vanderlip Sr. donated the 35 acres overlooking the harbor and ocean to promote the creation of a country school where the environment and tranquil pace would foster. It was the first high school on the Peninsula and operated the first co-educational dormitories on the West Coast.

26800 S. Academy Drive, PVP, 90274
chadwickschool.org

No parking on residential streets. (Also available by foot through Chadwick Canyon. Park at RHE City Hall. Two miles round trip.)



2. CHOWIGNA INDIAN VILLAGE PLAQUE

● CULTURE & HISTORY

This plaque honors the Tongva who made the cliffs their home for a period of 8,000 years. The bluff above Malaga Cove is a large and important archaeological site with at least four levels of Native American occupancy discovered, each with characteristic tools, implements and weapons. The plaque is at the DOP Hub entrance next to the parking lot in front of Malaga Cove School.

375 Via Almar, PVE, 90274



22. CRENSHAW HORSE TUNNEL

● ENVIRONMENT & URBAN PLANNING

Before roads and residences, horse trails crisscrossed the Peninsula. To accommodate horse traffic, this tunnel allows horses to cross one of the busiest roads in the City. With dedicated horse and pedestrian trails, the tunnel represents the unique characteristics of this equestrian-focused city. A similar tunnel is located under Hawthorne.

Short walk from Rolling Hills Estates City Hall or Right of Weber Equestrian Center parking lot.

Parking available at Rolling Hills Estates City Hall. No handicap accessibility. Unpassable if rained out. Respect horse riders. Horses have right-of-way.



51. FIRST JAPANESE-AMERICAN FARM ON PENINSULA AT FOUNDERS PARK PLAQUE

● CULTURE & HISTORY

This plaque honors the first Japanese-American farm built by Kumekichi Ishibashi who came to the Peninsula ca 1906. Ishibashi is said to have introduced "dry farming" techniques on the Peninsula. During World War II, the Ishibashi family was incarcerated in Poston, Arizona. The family was one of the few original farming families who returned after the war to farm.

1 Trump National Drive, RPV, 90275

rpvca.gov

Dawn to dusk. Limited parking in lot.

Street parking available on Trump Drive.

Marker located halfway down the paved path on the right when looking toward the ocean.



6. FREDERICK LAW OLMSTED JR. PLAQUE

● ARCHITECTURE

This plaque honors Frederick Law Olmsted,

Jr, Director of Design for the Palos Verdes Project who lived in Palos Verdes Estates from 1922 to 1931. Olmsted worked on layouts for the whole community, including roads, parks, parkways, civic centers, school sites, and other infrastructure throughout the Peninsula. His work on the Peninsula's first subdivision (Palos Verdes Estates) included the Malaga Cove Library, Malaga Cove School, La Venta Inn and a number of residences. Olmsted's work with the Palos Verdes Project made Palos Verdes one of the nation's first planned communities and contributed to the landscapes that define Palos Verdes today.

2101 Rosita Place, PVE, 90274

Parking available at St. Francis Episcopal Church.

Short walk to the plaque. Exterior only. Structure is a private residence.



11. GARDNER BUILDING PLAQUE

● ARCHITECTURE

Built in 1925, the Gardner Building (aka Casa Primera) was the

first commercial building. The building once housed the Palos Verdes Homes Association, Art Jury, grocery store, drug store, school and library. The Spanish Renaissance-style building was designed by architects Weber, Staunton and Spaulding.

68 Malaga Cove Plaza, PVE, 90274



29. GEORGE F CANYON NATURE CENTER

● ENVIRONMENT & URBAN PLANNING

The Center overlooks

the 51-acre George F Canyon with a 1.6-mile trail that winds through shaded riparian woodland and coastal sage scrub habitat. It has a rare mainland exposure of the Peninsula's Catalina schist bedrock. Inside the Center visitors can interact with exhibits to learn about the plants, animals, insects, geology and Peninsula natural history. The Center is owned by the City of Rolling Hills Estates and operated by the Palos Verdes Peninsula Land Conservancy and will be upgraded over the next few years.

27305 Palos Verdes Dr East, RHE, 90274

pvplc.org

10:00 am - 3:30 pm. Parking available in the Center lot. Additional overflow parking in a gravel lot at the trail head up Palos Verdes Dr.



48. HARDEN GATEHOUSE PLAQUE

● ARCHITECTURE

The plaque is located on the left hand side of

the gate. Frank A. Vanderlip, Sr's sister Ruth and brother-in-law Edward Harden built this Gatehouse, as it stands today, in 1926. They hired architect Gordon Kaufmann and the Olmsted Brothers designed the landscaping. The Tuscan-designed villa was never built due to the 1929 Stock Market crash.

5500 Palos Verdes Dr. South, RPV, 90275

No parking. Structure is a private residence.



42. HATANO FARM LOOKOUT

● CULTURE & HISTORY

Hatano Farm was designated a California Point of Historical

Interest in 2023 serving as an example of the postwar movement and settlement of Japanese Americans. Established in 1953, Hatano Farm continued the longstanding tradition of Japanese American flower farming on the Peninsula. Meet with architectural historian Sian Winship and learn of the significance of the Peninsula's most recent historical site.

Rancho Palos Verdes City Hall
30940 Hawthorne Boulevard, RPV, 90275

rpvca.gov

Docent available 9:30 am - Noon.

Parking at City Hall. Site located past helipad.



25. KELLY'S KORNER (ROLLING HILLS GENERAL STORE)

● CULTURE & HISTORY

The General Store was designed by renowned architect Paul R. Williams in 1939. Now home to Kelly's Korner sandwich shop, the wood board and red-roof building has served as a grocery store, post office, clothing and feed store, town hall and clubhouse for community activities. In 1977, it was included in Rolling Hills Estates' historic landmark overlay designation. The Kelly family has owned and operated the popular sandwich shop since 1984. Grab a bite and walk around the exterior of the building. Outdoor dining only. No access to the building interior.

26947 Rolling Hills Road, RHE, 90274

kellyskornerpv.com • 310.541.2234

10:00 am - 4:30 pm • Parking is limited.



“I found myself reminded vividly of the Sorrentine Peninsula and the Amalfi Drive: Yet the most exciting part of my vision was that this gorgeous scene was not a piece of Italy at all but was here in America, an unspoiled sheet of paper to be written on with loving care.”

— FRANK A. VANDERLIP, SR.

[TOP TO BOTTOM]

Display of archaeological artifacts found during early development, 1926.

Group portrait of Frank A. Vanderlip, Sr. with wife Narcissa Mabel Cox Vanderlip and children, ca. 1911.

Harry Phillips Sr. on the Phillips Ranch in an area that later became the Palos Verdes Golf Course, 1915.

Early Japanese farming families, 1931.

Instrument shelter recording meteorological data to determine best areas for farming and building sites, 1915.

Cattle ranch, 1915.





13. LA VENTA INN

● ARCHITECTURE

La Venta Inn was constructed in 1923 by architect Walter Davis as a real estate clubhouse for the

Palos Verdes Project. For one hundred years it's had a colorful history as an Inn, a private home, and world-renowned event venue. Today, it continues to be a beacon of history and celebration, hosting weddings, private events, and community experiences. Made by Meg catering is the exclusive caterer for all events at this location. Tours provided. Ceremony lawn accessible by stairs only. Limited parking.

796 Via Del Monte, PVE, 90274

laventa.com • 310.373.0123

9:00 am - Noon.

52 spaces for parking



“A virgin tract of twenty five square miles, with every advantage of climate, coast, and lofty intricate hills, planned, guided, controlled from the very start with the sole exclusive object of making it and keeping it...the pleasantest place to live that it can possibly be made. If we be not rogues or fools...the thing can be done as it never has been done in the world before.”

— FREDERICK LAW OLMSTED, JR., 1922



9. LOS ANGELES COUNTY FIRE DEPARTMENT PALOS VERDES ESTATES FIRE STATION 2

● CIVIC

The City of Palos Verdes Estates has contracted with Los Angeles County for fire suppression, enforcement of the Fire Code, and paramedic services since 1986. The County also provides emergency ambulance service. Prior to 1986, the City had its own fire services. Visitors will get a tour of the Fire Station and see an antique fire truck.

340 Palos Verdes Drive West, PVE, 90274

10:00 am - 4:00 pm

Closed if out on service call.



[TOP TO BOTTOM]

La Venta Inn, originally built as a club house to entertain realtors and prospective land owners, was the first permanent building constructed by the Palos Verdes Project, 1926.

Palos Verdes Project sales team after selling \$15,000 in underwriting notes, 1923.

Frederick Law Olmsted, Jr., landscape architect for the Palos Verdes Project, 1925.

Mule-drawn wagons traveling south along unpaved Granvia La Costa (now PV Drive West), 1924.

40. LOS ANGELES DEFENSE AREA NIKE MISSILE SITE #55 SILO

● CIVIC

The Point Vicente Military Reservation, now the City Hall site for RPV, was formerly the administration and launch facilities for the Nike Ajax and Nike Hercules anti-aircraft missiles in the 1950s and 1960s. The facility was one of 16 placed around Southern California to defend Los Angeles from a military attack during the Cold War. The site was decommissioned in 1974. Not normally open to visitors. Visitors can see one of the two silos which has remained relatively unchanged since it was decommissioned.

30940 Hawthorne Boulevard, RPV, 90275
rpvca.gov

9:00 am - Noon. Visitors must sign a liability waiver before entering the silo. No handicap accessibility. Steep stairs at entrance.



56. LOS ANGELES MARITIME MUSEUM

● CULTURE & HISTORY

The Los Angeles Maritime Museum is located in San Pedro,

in the historic 1941 Municipal Ferry Terminal building. The building has been operating as a museum since 1980. Visitors will learn about the history of Los Angeles harbor with interactive exhibits, and enjoy views of the busy main channel from the back patio.

Berth 84 Foot of 6th Street, San Pedro, 90731
(For GPS, use 600 Sampson Way.)

lamaritimemuseum.org • 310.548.7618
Noon - 5 pm (last entry at 4:30 pm). Street parking on 5th and 6th streets, and pay lots at the USS IOWA and Liberty Hill Plaza. Free admission for DOP 2023 guests and 10% discount at museum shop.



19. LUNADA BAY PLAZA “ANNIVERSARY CELEBRATION CONCERT IN THE PARK”

● BUSINESS DISTRICT

Lunada Bay Plaza was one of the original planned business districts of the Palos Verdes Project. It was to be the largest of the

districts and plans included a theater, post office, community building and a variety of stores. While these plans didn't materialize, the Plaza is still the hub of the community with summer concerts and festivals throughout the year. Celebration concert sponsored by Lunada Bay Homeowners Association will feature cool jazz from the 1920s. Archival posters, activities, food, and beverages available. Bring a lawn chair.

2201 Palos Verdes Drive West @ Yarmouth Road, PVE, 90274

LBHOA.org • 4:00 pm - 6:00 pm



12. MALAGA COVE LIBRARY

● CIVIC

Opening as the Palos Verdes Public Library & Art Gallery on

June 3, 1930, the Mediterranean Revival architectural style building was designed by architect Myron Hunt. The garden outside the Gallery is an original Frederick Law Olmsted, Jr. garden. A multi-year renovation project to bring back original lighting and interiors was completed in 2017. Tour the building including the vault, Gallery, tower room and see the original dumbwaiter. No elevators. Visit the Book Sale. Opens at 9:00 am on June 17. Regular hours M-Th 10-6, F 2-6, Sat 10-5.

2400 Via Campesina, PVE, 90274
pvld.org • 310.921.7547

9:00 am - 5:00 pm. Limited parking in the lot off Via Pinalte. Street parking available.



10. MALAGA COVE PLAZA HISTORIC DISTRICT

● BUSINESS DISTRICT

The District is the most recent historically

designated site in the City of PVE. One of the original town centers for the first subdivision planned for the Peninsula, the Mediterranean Revival style Plaza was mostly developed between 1925-1964 with buildings by architect Walter Swindle Davis, Sumner Spaulding, Carrington Lewis and open space by Olmsted Brothers. Visitors will learn about the District's history including Neptune Fountain.

Malaga Cove Plaza, Palos Verdes Drive West between Via Tejon and Via Corta, PVE, 90274. Docent available 10:00 am - 2:00 pm. Plaza parking limited.



1. MALAGA COVE SCHOOL (PVPUSD ADMINISTRATION)

● ARCHITECTURE

Malaga Cove School opened in 1926 with 35

students and was the first grammar school. Designed by prominent Los Angeles architectural firm Allison & Allison, the building received the American Institute of Architects award for the most notable school architecture in Southern California in 1925-26. The site became the District Offices in 2010. Tour the auditorium, now used for Board meetings.

375 Via Almar, PVE, 90274 • 9:30 am - 3:30 pm



35. MIRALETESTE LIBRARY

● CIVIC

The building was designed by architect Thomas J. Russell. The

wall of windows provides spectacular views. Originally a “station” library at Miraleste Elementary School in the 1950s, this building has served as a vital community hub since 1970. Visitors can tour the building, participate in an art project, and view a drought-tolerant year-round hummingbird and pollinator garden. Opens 9:00 am on June 17. Regular hours M-Th 10-6, F 2-6, Sat 10-5.

29089 Palos Verdes Drive East, RPV, 90275
pvld.org • 310.921.7551

9:00 am - 5:00 pm. Limited parking.



36. MIRALETESTE PLAZA

● BUSINESS DISTRICT

Miraleste Plaza dates back to 1924 and is located in the heart of

the scenic community of Miraleste in RPV. Miraleste was one of the original six residential planned communities of the Palos Verdes Project and today remains under the covenants of the Palos Verdes Homes Association & Art Jury. The area includes 300 acres with 377 homes, nature trails and panoramic views. Miraleste Homeowners Association will provide Miraleste's history and the creation of the Miraleste Parks District. Docents and photo exhibits available.

19 Miraleste Plaza, RPV, 90275
10:00 am - 3:30 pm



DOORS OPEN PENINSULA SITES

- | | |
|---|---|
| 1 Malaga Cove School (PVPUSD) | 38 Salvation Army College for Officer Training |
| 2 Chowigna Indian Village Plaque | 39 Rancho Palos Verdes City Hall |
| 3 Neighborhood Church of Palos Verdes | 40 Los Angeles Defense Area Nike Missile Silo |
| 4 Palos Verdes Beach & Athletic Club | 41 Battery Barnes |
| 5 St. Francis Episcopal Church | 42 Hatano Farm Lookout |
| 6 Frederick Law Olmsted Jr. Plaque | 43 Point Vicente Interpretive Center |
| 7 Palos Verdes Homes Association | 44 Point Vicente Lighthouse |
| 8 Palos Verdes Estates Police Department | 45 Terranea Resort |
| 9 LA County Fire Department - PVE | 46 Tongva Monument at Abalone Cove |
| 10 Malaga Cove Plaza Historic District | 47 Wayfarers Chapel |
| 11 Gardner Building Plaque | 48 Harden Gatehouse Plaque |
| 12 Malaga Cove Library | 49 Villa Francesca Plaque |
| 13 La Venta Inn | 50 Portuguese Bend Whaling Station Plaque |
| 14 Palos Verdes Golf Club Plaque | 51 First Japanese-American Farm on Peninsula at Founders Park |
| 15 Palos Verdes Estates Tennis Club | 52 White Point Nature Education Center and Preserve |
| 16 Palos Verdes Stables | 53 Point Fermin Lighthouse |
| 17 Mirlo Gate Lodge Tower | 54 Cabrillo Marine Aquarium |
| 18 Palos Verdes High School | 55 Muller House Museum |
| 19 Lunada Bay Plaza Celebration Concert | 56 Los Angeles Maritime Museum |
| 20 Beautify Lunada Bay | |
| 21 Rolling Hills Estates City Hall | |
| 22 Crenshaw Horse Tunnel | |
| 23 Peter Weber Equestrian Center | |
| 24 South Coast Botanic Garden | |
| 25 Kelly's Korner (Rolling Hills General Store) | |

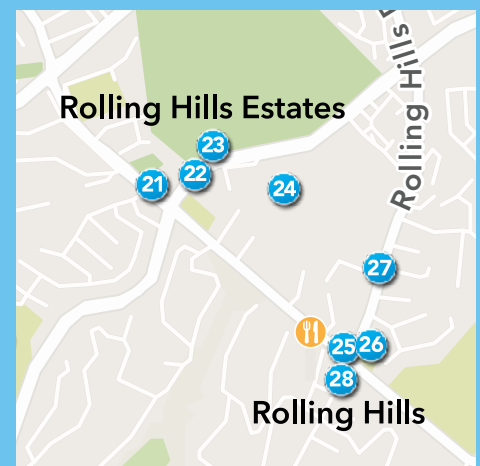
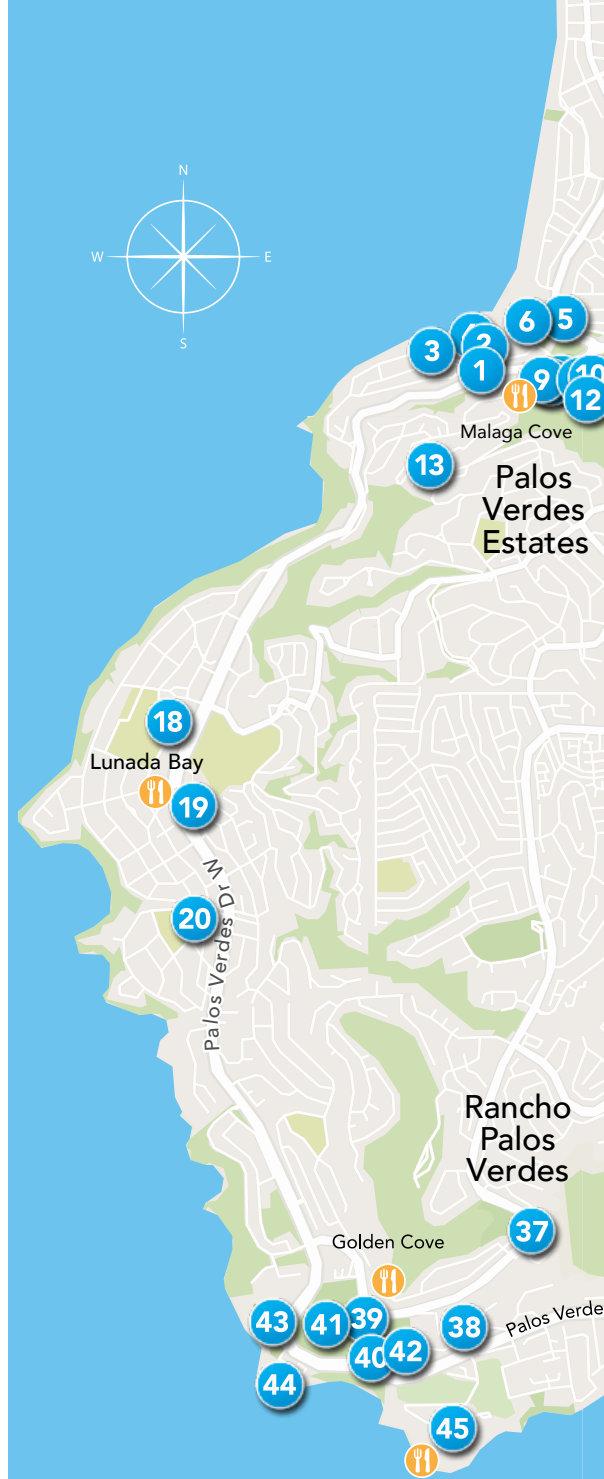
- | |
|--------------------------------------|
| 26 Peninsula Heritage School |
| 27 "The Farmery" Plaque |
| 28 Rolling Hills Gatehouse Plaque |
| 29 George F Canyon Nature Center |
| 30 Chadwick School Plaque |
| 31 Palos Verdes Flower Talking Clock |
| 32 Peninsula Center Library |
| 33 Palos Verdes Art Center |
| 34 Palos Verdes College Ruins |
| 35 Miraleste Library |
| 36 Miraleste Plaza |
| 37 4th City Founders Plaque |

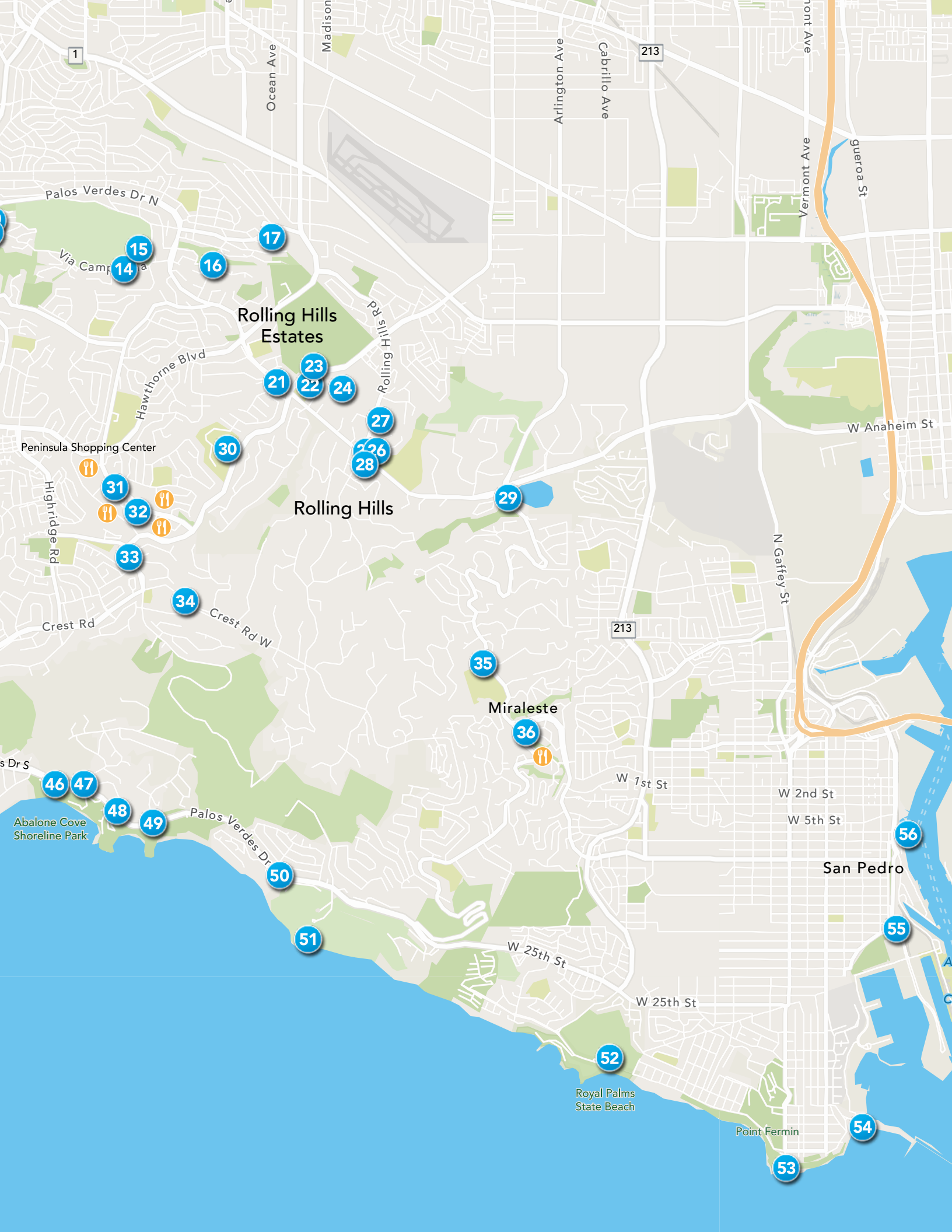
DOP SUPPORTER EATERIES

- Reverent (RHE)
- Pavilions (RHE)
- Original Red Onion (RHE)
- Promenade PV Shopping Mall (RHE)

RESTAURANTS AND OTHER EATERIES LOCATED IN

- Malaga Cove (PVE)
- Lunada Bay (PVE)
- Golden Cove (RPV)
- Peninsula Shopping Center (RHE)
- Miraleste (RPV)





1

15

14

16

17

Rolling Hills Estates

23

22

24

27

26

28

30

31

32

33

34

29

35

36

Miraleste

46

47

48

49

50

51

52

53

54

55

56

San Pedro

Peninsula Shopping Center

Abalone Cove Shoreline Park

Royal Palms State Beach

Point Fermin

Ocean Ave

Madison

Arlington Ave

Cabrillo Ave

213

Vermont Ave

Guerra St

W Anaheim St

N Gaffey St

213

W 1st St

W 2nd St

W 5th St

W 25th St

W 25th St

Palos Verdes Dr N

Via Camp

Hawthorne Blvd

Rolling Hills Dr

Highridge Rd

Crest Rd

Crest Rd W

Palos Verdes Dr

17. MIRLO GATE LODGE TOWER AKA "MIRLO GATE HOUSE"

● ARCHITECTURE

The entirely round Mirlo Gate Lodge Tower was designed in 1925 by architect Clarence E. Howard, known for his design of the reflecting pool at the Lincoln Memorial. Built in 1926 of PV stone, Mirlo is 508 sq. ft. and 18 ft. in diameter, and sits on 79,500 sq. ft. of Parklands hillside. Originally intended as a gated entrance (with living quarters), the tower was built as a part of the Palos Verdes Project. Mirlo Gate Lodge Tower is owned by the City of Palos Verdes Estates. Visitors can tour the inside of the structure.

4420 Via Valmonte, PVE, 90274

9:00 am - 4:00 pm

No parking. Shuttle available from Valmonte School parking lot (3801 Via La Selva, PVE). Roundtrip 25 minutes. Visitors must sign a liability waiver before entering.



55. MULLER HOUSE MUSEUM

● CULTURE & HISTORY

The Muller House Museum is owned and operated by the San

Pedro Bay Historical Society. It was the home of William A. Muller, a pioneer ship-builder in the Los Angeles Harbor. Built in 1899, the exterior features Colonial Revival embellishments, echoed inside through Muller's own skilled woodworking. The house is an LA Historical-Cultural Monument site. The Historical Society acquired the house in 1985 and after careful restoration opened in 1990. Visitors will have a docent-led tour and learn about the Muller family and San Pedro history. Tours last about 40 minutes. Second floor accessible by stairs only.

1542 S. Beacon Street, San Pedro, 90731

sanpedrobayhistoricalsociety.com

310.344.0713

Noon - 4:00 pm. Limited lot parking.

Street parking available. Photography of building interior not allowed.



3. NEIGHBORHOOD CHURCH OF PALOS VERDES ESTATES

● ARCHITECTURE

The Neighborhood

Church occupies the former mansion of a Los Angeles department store owner, John Joseph Haggarty. Completed in 1928, it was designed as an Italian Renaissance villa by Armand Monaco with 15,000 sq. ft. of living area and 32 rooms. It was landscaped by the Olmsted Brothers. Haggarty owned the home only 5 years and sold it in 1933 due to financial problems. After several owners, the Neighborhood Church purchased the property in 1950. Visitors will have docent-led tours of the building. Docent-led tours conducted throughout the year on Sundays at 11:00.

415 Paseo del Mar, PVE, 90274 • ncpve.org

June 17, 9:00 am - Noon

June 18, 11:00 am - 4:00 pm



33. PALOS VERDES ART CENTER

● CULTURE & HISTORY

Palos Verdes Art Center / Beverly G. Alpay Center for

Arts Education is a nonprofit community visual arts school and gallery. Founded in 1931 as the Palos Verdes Community Arts Association, the Art Center is one of the oldest visual art nonprofit organizations in Los Angeles County. Visitors will view work by art students from Southern California colleges and universities showcased in Palos Verdes Art Center's Alpay Scholarship Exhibition, Now Trending.

5504 Crestridge Road, RPV, 90275

pvcartcenter.org • 310.541.2479

10:00 am - 4:00 pm. Limited parking in lot.

Parking available on Crenshaw and Crestridge.



4. PALOS VERDES BEACH & ATHLETIC CLUB

● ARCHITECTURE

The Club, originally called Palos Verdes

Bathhouse and Beach Club, was designed by noted architect Kirtland Cutter and opened in 1930 as part of the Palos Verdes Project. In 1939, the newly incorporated City of Palos Verdes Estates assumed ownership from the

Palos Verdes Homes Association where it has remained one of the city's amenities. After years of disrepair in the 1970s and 1980s, the Club was rescued from demolition and restored by a group of dedicated residents. It reopened in 1993. Visitors can tour the 5-story clubhouse and facility.

389 Paseo del Mar, PVE, 90274

pvbac.net • 310.375.8777 • 9:00 am - 1:00 pm

No wheelchair accessibility;

ADA compliance pending.



34. PALOS VERDES COLLEGE RUINS

● CULTURE & HISTORY

A private liberal arts college, Palos Verdes College occupied this

site from 1947-1955. The College converted a complex of barracks buildings formerly used by the Army Air Force. The site was only temporary pending a large permanent campus. The Korean War (1950-1953) and a lack of funding caused the school to close. The site is now home to Palos Verdes Peninsula Unified School District's Rancho Del Mar Continuing High School and PV Transit Authority.

38 Crest Rd West, RH, 90274

8:30 am - 4:00 pm

Limited parking. Building remnants fenced off and visible from fence line near entrance.

8. PALOS VERDES ESTATES POLICE DEPARTMENT

● CIVIC

The City of Palos Verdes Estates is the

only Peninsula city with its own Police Department (PVPD). Police service began in 1924 when only a few homes were under construction. In 1929, there were only three officers. Today the PVEPD has 22 sworn officers and a number of support staff and volunteers to protect and provide vital services to the community. Visitors can tour the building, jail, shooting range, and see the PD's classic Car 54 and other vehicles, and meet the PD officers.

340 Palos Verdes Drive West, PVE, 90274

pvestates.org/home • 310.750.9788

9:00 am - 4:00 pm. Photography not allowed in Communications/Dispatch Center.



15. PALOS VERDES ESTATES TENNIS CLUB

● CULTURE & HISTORY

The Palos Verdes Tennis Club (PVTC) is one of the City of PVE's amenities. A private tennis and pickleball club, it has 11 lighted tennis courts, 8 lighted pickleball courts, a full-service pro shop, a locker room with showers, and a clubhouse. PVTC has a junior tennis academy for members and non-members. PVTC opened in 1963. The clubhouse was dedicated and presented to the City in 1970. July 2023 marks the PVTC's 60th anniversary. Visitors can take a self-guided tour. Regular hours are M-Sun 7:30 am - 10:00 pm.

3033 Via Campesina, PVE, 90274

pvtenniscub.com • 310.373.6326

Noon - 4:00 pm. Limited parking. Snacks and drinks available for purchase in Pro Shop. (Card only.)



“ The history of the Palos Verdes Project is the history of Palos Verdes Estates. On the 100th anniversary of the Palos Verdes Project, we celebrate the enduring vision of Frank Vanderlip Sr. and the Olmsted Brothers who transformed this breathtaking landscape into the thriving community we live in today. ”

— MAYOR ROOS, CITY OF PALOS VERDES ESTATES

31. PALOS VERDES FLOWER TALKING CLOCK

● CULTURE & HISTORY

The Talking Clock is the first Flower Talking Clock in the U.S. and was created and donated to the community by resident Michel Medawar in 1987. The heart of the clock is a Patek Philippe time base designed specifically for the talking clock invention and resulted from a collaboration between Medawar and the electronic division of Patek Philippe in the early 1960s. The clock announces the time on the hour. Visitors can visit the vault room housing the clock's mechanism and learn its history from the creator.

Promenade on the Peninsula,

550 Deep Valley Drive, RHE, 90274

Located near the intersection of Silver Spur and Norris Center Dr. • medawarfinejewelers.com

10:00 am - 3:00 pm. Parking available in the mall parking structure. No handicap accessibility. Steep stairs into the vault.



[TOP TO BOTTOM]

The Palos Verdes Transportation Company started in 1925 to and from Redondo Beach, 1925.

Neptune Fountain dedication ceremony, 1930.

North entrance of Palos Verdes Estates, 1926.

Gardner building dedication ceremony, 1925.

Land Office No.1 near the entrance of Palos Verdes Estates, 1922.





“The City of Rolling Hills Estates is pleased to be a part of Doors Open Peninsula as we commemorate what was imagined 100 years ago to establish the high quality of life that our residents and businesses have come to enjoy. We honor this legacy as we celebrate the past, embrace the present, and look to the future of our special community.”

— MAYOR HUFF, CITY OF ROLLING HILLS ESTATES



14. PALOS VERDES GOLF AND COUNTRY CLUB PLAQUE

● ARCHITECTURE

Palos Verdes Golf Club

opened on November 15, 1924. The golf course was designed and built by the renowned team of William P. “Billy” Bell and George C. Thomas, a classic example of the “Golden Age” of golf course design. The Spanish-style clubhouse was designed by Clarence E. Howard with original landscaping by Olmsted Brothers. In recent years, restoration and design improvements have been overseen by golf course architect Todd Ekenrode.

3301 Via Campesina, PVE, 90274

pvgc.com

Interior unavailable June 17 due to construction. Limited parking.



18. PALOS VERDES HIGH SCHOOL

● ARCHITECTURE

Completed in 1961, Palos Verdes High School was the

first public high school on the Peninsula. Designed by Richard Neutra and Robert Alexander with local architect Carrington Lewis, the plant includes a mix of Mid-Century modern and traditional gabled tile roofs and stucco walls. Neutra enthusiasts will recognize the classic “spider leg” metal supports on the canopies. Visitors are welcome to walk about the grounds.

600 Cloyden Road, PVE, 90274

Grounds open 8:30 am - 4:00 pm.



[TOP TO BOTTOM]

Ladies’ sun parlor at the Palos Verdes Golf Club, 1925.

Entrance to the Neighborhood Church, formerly the Haggerty Mansion, 1928.

Mirlo Gate Lodge at the entrance of Palos Verdes Estates, 1925.

Students on the first day of class at Malaga Cove School in the School’s third year, 1927.

7. PALOS VERDES HOMES ASSOCIATION

● CIVIC

The Palos Verdes Homes Association

and Art Jury were established in June 1923 to assure homeowners that the neighborhoods in Palos Verdes Estates and Miraleste can never be spoiled. It has been guiding property owners to bring about architectural integrity and building aesthetics while enhancing the wonderful natural beauty of the property, as laid out by our founders.

320 Palos Verdes Drive West, PVE, 90274
pvha.org • Unavailable June 17.



16. PALOS VERDES STABLES

● CULTURE & HISTORY

Originally called the Riding Academy, the Palos Verdes Stables

were established in 1925 and were one of the community amenities started by the Palos Verdes Project. The Stables have a long history of comprehensive equestrian programs catering to every discipline of riding and any experience level. Trail program links to trails in PVE.

4057 Via Opatá, PVE, 90274

pv-stables.com

10:00 am - 1:00 pm • Parking available on Via Opatá and neighboring streets. Stables are a short walk up the driveway. No touching or feeding horses. Riding lessons may be in progress.



32. PENINSULA CENTER LIBRARY

● CIVIC

The original 32,000 sq. ft Peninsula Center Library was designed by

pioneers in “green” design, A. Quincy Jones and Frederick E. Emmons in 1967. In 1995, architects Zimmer, Gunsul, Fransca (ZGF) renovated and expanded the space, nearly doubling its size. Visitors can take self-guided tours and view the original architectural models for both design phases, public art integral to the Library redesign and exhibits on loan from the PV Historical Society. Opens at 9:00 am on June 17. Regular hours M-Th 10-8, F 2-6, Sat 10-5, Sun 1-5.

701 Silver Spur Road, RHE, 90274

pvld.org • 310.377.9584

Exhibit available 9:00 am - 3:00 pm on main floor and public art on floors 1-3.



26. PENINSULA HERITAGE SCHOOL

● CULTURE & HISTORY

Founded in 1961, Peninsula Heritage

School purchased its current location in 1976. The school provides a high-quality education to Kindergarten through 8th Graders with small class sizes infused with a character qualities program. The school's ranch-style buildings include exteriors white “board and batten” design. The campus served as a school for children in the City of Rolling Hills, as a PVSD elementary school and as the City Hall for Rolling Hills Estates. One of the school's buildings is the original “Boy Scout House.” The campus is included in RHE's historic landmark overlay designation zone. Tours of this campus, historical image displays, and program brochures will be available.

26944 Rolling Hills Road, RHE, 90274

peninsulaheritage.org • 310.987.0145
9:00 am - 2:00 pm



23. PETER WEBER EQUESTRIAN CENTER

● CIVIC

Established in the 1960s as a municipal

stables on land donated by RHE resident William Pearson, the Center was built on portions of the Palos Verdes landfill. Renamed in 2005 in honor of Peter Weber, a former RHE mayor, the Center specializes in boarding care, provides riding lessons and trail rides, and has a petting zoo. The Center has access to 90 miles of beautifully manicured trails. Off the beaten path, visitors can walk around the site and learn about RHE's premiere equestrian center.

26401 Crenshaw Boulevard, RHE, 90274

pwecent.com • 310.365.7343

9:00 am - 5:00 pm

Limited parking. Parking available at City Hall a short walk from the Center. Dirt footing. Strollers OK. Petting zoo by appointment only. \$50 per ½ hour.



53. POINT FERMIN LIGHTHOUSE

● ARCHITECTURE

The Point Fermin Lighthouse was built in 1874 to light the

entrance to the growing Los Angeles Harbor. The building was restored and listed on the National Register in anticipation of its 100th birthday in 1974. In 2002, the Lighthouse opened to the public for the first time. The facility is part of the Los Angeles City's Recreation and Parks Department.

807 W. Paseo del Mar, San Pedro, 90731

pflhs.org • 310.241.0684

Guided tours available at 1:00 pm, 2:00 pm and 3:00 pm. Limited parking. Food vendors are often at the front of the park.



43. POINT VICENTE INTERPRETIVE CENTER AND LOWER POINT VICENTE PARK

● CULTURE & HISTORY

This 26-acre site was formerly used by the United States Army as a rifle range. Known as Nike Site LA-55-Point Vicente Rifle Range, it was used for training primarily during the Cold War era. It was deactivated in 1974. The Interpretive Center opened in 1984 and expanded in 2006. Center exhibits highlight the history of the Peninsula and adjacent waters and includes the Pt. Vicente Lighthouse Fresnel Lens and a life-size baby gray whale model. Visitors can learn about the area's unique geology, fossils, early artifacts, Tongva Indians, Japanese farmers, Spanish ranchers, offshore Portuguese whalers and early visionaries.

31501 Palos Verdes Drive West, RPV, 90275

rpvca.gov/facilities/facility/details/
point-vicente-interpretive-center-13
310.544.5375

10:00 am - 5:00 pm

Gift Shop on site and docent led tours.



44. POINT VICENTE LIGHTHOUSE

● ARCHITECTURE

Built in 1926 and operated by the U.S. Coast Guard, the

Lighthouse has been in continuous use helping ships navigate to and from the Ports of Long Beach and Los Angeles. It still flashes twice every 20 seconds and is a critical aid to navigation even in an electronic navigation and GPS world. Walk the grounds and view the Display Center in the building that originally housed the foghorn. Guests may learn about all 11 of the Coast Guard's missions, not just Aids to Navigation and Lighthouses. Walking tour, information brochures, and lighthouse stamp available. Docents available on the second Saturday of each month from 10:00 am - 3:00 pm.

31550 Palos Verdes Drive West, RPV, 90275
9:00 am - 4:30 pm

Ample parking adjacent to Lighthouse property in dirt lot. No parking within Lighthouse gates. Handicapped parking available on site inside Lighthouse gates by talking to gate guard and showing handicapped placard. Lighthouse tower itself is closed. Dogs on leash OK; please scoop the poop. Bicycles OK; please walk or lock up.



50. PORTUGUESE BEND WHALING STATION PLAQUE

● CULTURE & HISTORY

The cove at Portuguese Point was used as a

whaling station actively from 1860 to 1885. It was one of many such whaling stations along the California coast. Three of the original structures, the try-pots and crumbling furnaces remained until 1928. The area is now home to the Portuguese Bend Beach Club. Plaque located at Club entrance.

4100 Palos Verdes Dr. South, RPV, 90275
Limited parking.



39. RANCHO PALOS VERDES CITY HALL BUILDING COMPLEX

● CIVIC

This area was "tract 8" of the former Pt. Vicente Military Reservation established in 1942. In the 1950s, the complex became part of Los Angeles Area Defense Nike Battery #55, a system of defenses that used radar, missile launchers, guidance systems and computers. The City moved into the complex in 1975. The 71 acre site was formerly dedicated in 1979. The buildings and site are largely the same as when used by the military.

30940 Hawthorne Boulevard, RPV, 90275
Rpvca.gov • Docent available 9:00 am - Noon.



21. ROLLING HILLS ESTATES CITY HALL

● CIVIC

Designed by architect Corwin Eberting, construction on the post

& beam building, featuring walls of glass and Palos Verdes stone started in 1973. The building was dedicated in June the following year. The building features panel carved doors designed by mid-century artist Evelyn Ackerman. From incorporation in 1957 to the completion of the municipal buildings, the City used space on the grounds on what is now the Peninsula Heritage School. The white picket fencing is distinctive to the City. Visitors will be able to tour the building and learn about its history.

4045 Palos Verdes North, RHE, 90274
rollinghillsestates.gov • 310.377.1577
10:00 am - 3:00 pm



28. ROLLING HILLS GATEHOUSE PLAQUE

● CIVIC

The plaque is located on the left just before the Rolling Hills gate. This unique city consists of three square miles of country estates with entry through four guarded gates. The area was originally developed and marketed as "dude" ranches with single story ranch-style homes. The Gatehouse with two Canary Palms was built in 1935.

On Portuguese Bend Rd near Palos Verdes Dr. North., RH.
Limited parking at City Hall. Additional parking available RH Community Association.



38. SALVATION ARMY COLLEGE FOR OFFICER TRAINING & USA WESTERN TERRITORIAL HEADQUARTERS

● CULTURE & HISTORY

The Salvation Army's 45-acre Crestmont facility was built in 1960 and was originally the campus of Marymount College. The original buildings were designed by Welton Beckett and Associates, architects of the Capitol Records building. The property was acquired by The Salvation Army in 1976. It is home to The Salvation Army's College for Officer Training (Seminary), an accredited two-year college, and is the headquarters of The Salvation Army in the Western United States (the USA Western Territory). Guided tours of site and history of College.

30840 Hawthorne Boulevard, RPV, 90275
crestmont.edu • 562.491.8390
9:00 am - 1:00 pm
Light refreshments following tours.



24. SOUTH COAST BOTANIC GARDEN

● ENVIRONMENT & URBAN PLANNING

South Coast Botanic Garden is one of the first botanic gardens in the world to be built on a sanitary landfill. The 87-acre area was used first as an open pit mine in the 1930s then a trash dump in the 1950s. From its visionary founder Francis Young, the Garden is now home to more than 2500 species of plants and provides unique exhibits and programming for all ages. Guests can enjoy Washed Ashore - Art to Save the Sea featuring 16 large-scale sculptures made from ocean waste (until September) and the annual butterfly exhibit.

26300 Crenshaw Boulevard, PV Peninsula, 90274
southcoastbotanicgarden.org • 424-452-0920
9:00 am - Noon • Parking limited.
DOP stamp station available in parking lot.
Garden entry fee required.



5. ST. FRANCIS EPISCOPAL CHURCH CHAPEL

● ARCHITECTURE

The Chapel was designed
by architect Walter

Swindell Davis. It was completed and dedicated in July, 1952. The Chapel, according to the architect, “was designed after the churches found in the little hill towns surrounding Assisi, with Gothic arches framing the choir, sanctuary and altar”. The stained glass windows were gifted as memorials and all the wooden pews were fully subscribed as gifts in one afternoon. Visitors can visit the Chapel and learn more about its history.

2200 Via Rosa, PVE, 90275

stfrancispalosverdes.org • 9:00 am - 4:30 pm

Ample parking including handicap spots. Street parking is also available on Via Rosa. Light refreshments provided throughout the day.



“ The Palos Verdes Peninsula is a unique paradise in Los Angeles County with a history as rich as its natural beauty. It’s remarkable to look back at the early days of the Peninsula and see what it would become — the City of Rancho Palos Verdes is proud to be part of that story for the past 50 years.”

— MAYOR FERRARO, CITY OF RANCHO PALOS VERDES

45. TERRANEA RESORT

● CULTURE & HISTORY

Terranea opened in
2009 and has welcomed
guests and the local

community to celebrate the natural beauty and rich history of the Palos Verdes Peninsula. Honoring the legacies that shaped this scenic, coastal enclave, Terranea pays homage through a variety of ways, including the Marineland and Catalina Ballrooms, Sea Hunt-inspired Nelson’s, and luxurious Vanderlip Suite. The resort’s 102 acres provide opportunities to discover the native flora and fauna, local wildlife, and sightings of whales and dolphins. Visitors can explore the location with an oceanfront hike or scenic walk, and learn more about its history, including an exhibit on Marineland. Coral trees in and around the property were preserved from Marineland.

100 Terranea Way, RPV, 90725

terranea.com • 310.265.2851

9:30 am – 4:30 pm. Limited public parking lot available. Valet parking available. Marineland exhibit at Pointe Discovery, located at main entrance adjacent to Sea Beans coffee shop.



[TOP TO BOTTOM]

Shepherd Robert K. Boyd with band of Karakul sheep, ca. 1950.

Portuguese Point, Rancho Palos Verdes, 1926.

Group portrait in front of newly completed San Pedro Grower’s Association community buildings, 1923.

Pt. Vicente Lighthouse, ca 1926. (Image courtesy National Archives.)



“With its unparalleled blend of natural splendor, top-notch schools, and tight-knit community, Palos Verdes Peninsula is a haven for those seeking an extraordinary life for themselves and their children. Here, my children grew and learned in the nurturing embrace of excellent schools, a wonderful library system, and a thriving sports and recreation scene. I am proud and grateful to call this place home.”
 — MAYOR WILSON, CITY OF ROLLING HILLS



27. “THE FARMERY” PLAQUE

● CULTURE & HISTORY

This plaque commemorates the site of the first family home on the Palos Verdes Peninsula built by Harry Phillips, a ranch foreman for George Bixby hired in 1894. Phillips was responsible for overseeing the majority of land on the Peninsula, developing herds of cattle and instituting farming operations. Known as The Farmery, the Phillips family lived here until the early 1920s. Phillips planted the grove of eucalyptus in Palos Verdes Estates as a windbreak.

Located in gravel lot at intersection of Rolling Hills Road and Lariat Lane, RHE, 90274.



46. TONGVA MONUMENT AT ABALONE COVE PARK

● CULTURE & HISTORY

Designed with the Gabrieleño/Tongva San Gabriel Band of Mission Indians, this monument honors the Indigenous people of Los Angeles. The plaque was designed by artist and sculptor, Geri Jimenez Gould. Tom Steers, local resident and champion of the project, involved active tribe leaders and elders including Chief Anthony Morales, the late Tribal Council Elder Julia Bogany, Ms. Gould, and Jesus Gutierrez, who are both Tongva-descendant elders. The monument is located just south of the parking lot.

5970 Palos Verdes Drive South, RPV, 90275
rpvca.gov/Facilities/Facility/Details/Abalone-Cove-Park-1

Dawn to dusk. One hour free parking for DOP visitors between 10:00 am - 2:00 pm, June 17.



[TOP TO BOTTOM]

Fire engines and police vehicles in parking lot of Peninsula Center Shopping Center, ca 1961.

Aerial view of future site of South Coast Botanic Garden, ca 1950.

Wayfarers Chapel interior, undated.

Horseback rider at Crenshaw Horse Tunnel, undated.

Iconic entrance sign of Marineland of the Pacific (now Terranea), ca. 1980s.



49. VILLA FRANCESCA PLAQUE

● ARCHITECTURE

This site was originally the estate of Harry

Benedict, an associate of Frank A. Vanderlip, Sr. and a major contributor to the development of the Palos Verdes Project and Palos Verdes. He served as a Director and President of Palos Verdes Corporation until 1954. Designed by Gordon B. Kaufman, the gatehouse and farmstead were completed in 1930. The name Villa Francesca honors Mrs. Frances Homberg Benedict, Harry's first wife.

At the intersection of Peppertree Drive and Palos Verdes Drive South, RPV, 90275. No parking. Structure is a private residence.



[TOP TO BOTTOM]

Palos Verdes Newspaper building at 27900 Silver Spur Road and Beechgate Drive, 1963.

Rolling Hills General Store, now Kelly's Korner, 1975.

Point Fermin Lighthouse, undated.

Christmas Tree Cove with Point Vicente Lighthouse in the distance, 1926.



47. WAYFARERS CHAPEL

● ARCHITECTURE

When completed in 1951, the Chapel stood alone with no trees or

other structures. Today, it is a "tree chapel." The cathedral-like majesty of the redwood trees in northern California inspired Chapel architect Lloyd Wright. The redwood trees that surround Wayfarers Chapel form living walls and roof to a natural sanctuary encased in glass with views of the surrounding forest and nearby Pacific Ocean. These are typical traits of Organic Architecture, which aims at using nature as the framework and regards the space inside as sacred. Lloyd Wright's design of Wayfarers Chapel is the perfect combination of nature and architectural genius and is one of the foremost examples of organic architecture.

5755 Palos Verdes Drive South, RPV, 90275
wayfarerschapel.org • 310.377.1650

Not available June 17. See Visitors Guidelines on website. Self-guided tour brochures available.



52. WHITE POINT NATURE EDUCATION CENTER AND PRESERVE

● ENVIRONMENT & URBAN PLANNING

Located on a restored 102-acre nature preserve, visitors can enjoy historical structures and scenic trails through restored natural lands. This educational facility is surrounded by a native plant demonstration garden where family activities and special events are presented to the public. It is housed in a repurposed Cold War missile assembly building and includes multimedia exhibits that move visitors through the timeline of White Point's cultural and natural history from the Pleistocene age to the present. The Preserve is owned by the City of LA and managed by the Palos Verdes Peninsula Land Conservancy. Guided hikes around the Preserve's restored coastal sage habitat and military history sites start at 10:30 am.

1600 W. Paseo Del Mar, San Pedro, 90731
pvplc.org • 10:00 am - 3:30 pm



Why Malaga Bank?

SAFE SOUND LOCAL



You deserve...
a true community partner

Every day at Malaga Bank you'll be treated like a VIP, whether it's by the president of our bank or another one of our experienced employees. We're proud that our community-centered culture at Malaga Bank has enabled us to contribute to the South Bay's economic growth and unique business identity for so many years. As a full-service community bank, we have been serving the financial needs of the South Bay community by providing competitive banking products and services for personal and business banking since 1985.

Experience the difference today and "bank local" with the bank that is a part of your community.



2514 Via Tejon, PVE, 90274 T 310.375.9000
27450 Hawthorne Blvd., RHE, 90274 T 310.541.3000
25700 Crenshaw Blvd., Torrance, 90505 T 310.784.2000
23670 Hawthorne Blvd., Ste. 101, Torrance, 90505 T 310.544-5180
1460 West 25th St., San Pedro, 90732 T 310.732.1100

www.malagabank.com

